

NEW PRODUCT NEWS

Open Loop

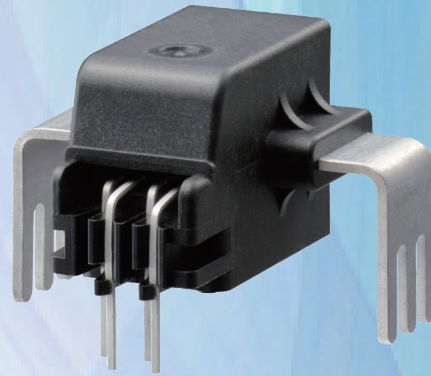
HP-PP series

Release scheduled for September 2019



Rated Current 10A ~ 50A

- PCB-mounting type (with primary bus bar)
- 5V single power supply, voltage output specifications
- High precision new current sensor for industrial devices by digital adjustment (output, offset, temperature correction)
- Built-in offset cancel circuit
- Output and offset voltage are compatible with ratiometric/non-ratiometric
- Wide-band and low loss



Applications Inverters, Servo drivers, Power supply equipment, Uninterruptible power supply (UPS), Welders, Photovoltaic generation

* Please note that performance and characteristics of the product may be subject to change without prior notice.

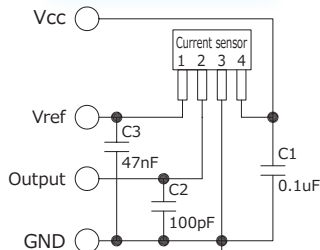
◎ Dimensions (mm)

Terminal

- 1 ... Reference voltage (Vref)
- 2 ... Output
- 3 ... GND
- 4 ... Vcc(+5V)
- 5 ~ 7 ... (-) iutput
- 8 ~ 10 ... (+) iutput

Weight: 5g

Circuit connection diagram



*Connect capacitor C1 around the current sensor terminal.

General tolerance: ± 0.5

