

CURRENT SENSORS

NEW PRODUCT NEWS

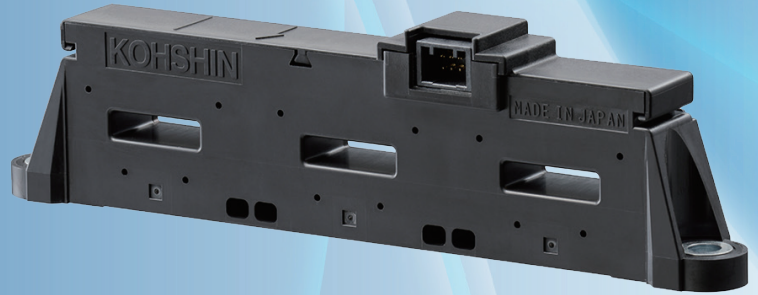
Open Loop

HP-AR series



Rated Current 200A ~ 900A

- Tri-phase current sensor in the same housing (Good fit 47mm/48mm pitch IGBT Modules)
- Operating temperature range: -40°C to +125°C
- Use high performance programmable Hall IC
- 5V single power supply
- Ratiometric output (sensitivity and offset)

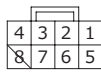


Applications xEV Inverters (HEV·EV·PHEV· etc)

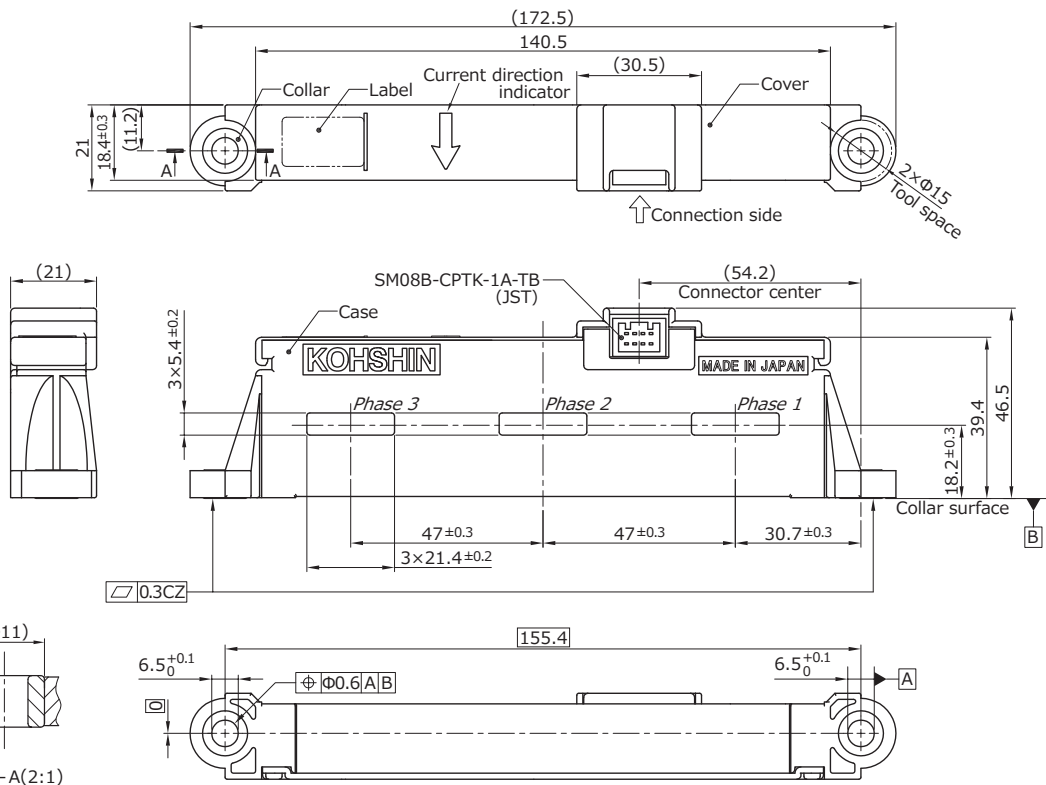
© Dimensions (mm)

Terminal

- 1 ... Output1
- 2 ... Output2
- 3 ... Output3
- 4 ... Vcc (+5v)
- 5 ... GND1
- 6 ... GND2
- 7 ... GND3
- 8 ... NC



Weight: 265g



General tolerance: ± 0.5