

HC-U



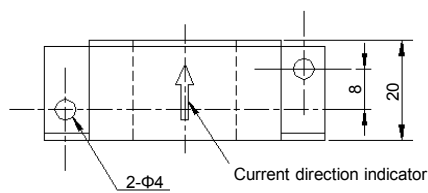
● Rated current 50A ~ 300A

Applications

Inverters, Power supply equipment, NC machine tools, Welders

Dimensions

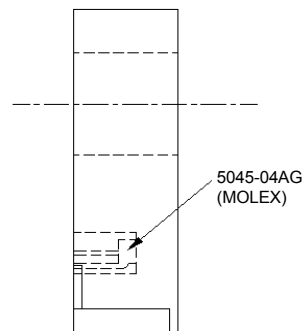
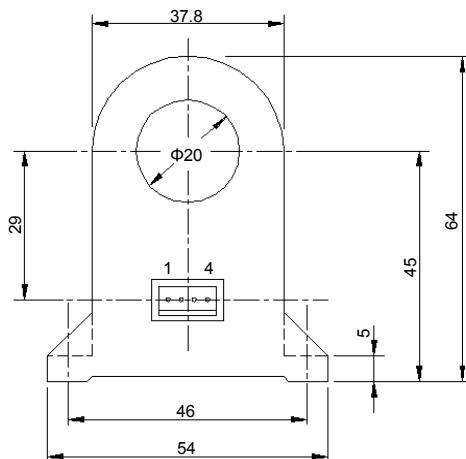
(mm)



Supported connector housing
5051-04 (MOLEX)

- Terminal No.
- 1 - (+) terminal
 - 2 - (-) terminal
 - 3 - Output
 - 4 - GND

Weight : 59g



General tolerance: ±0.5

Specification

Ta=25°C

| Type | HC-U050V4B15 | HC-U100V4B15 | HC-U300V4B15 |
|------------------------------|--|------------------|--------------|
| Rated current [If] | ±50A | ±100A | ±300A |
| Saturation current [Is] | ±150A | ±300A | ±700A |
| Linearity limits | 0~±150A | 0~±300A | 0~±600A |
| Rated output [Vh] | ±4V±1.5% | ±4V±1% | |
| Residual output [Vo] | Within ±50mV | Within ±30mV | |
| Output linearity | Within ±1% | | |
| Response time | Within 10μs (The smaller one on either at di/dt = 100A/μs or If/μs.) | | |
| Response performance | Within 10% | | |
| Hysteresis voltage range | Within 30mV | | |
| Output Temp. Coef. | Within ±0.08%/°C | | |
| Residual output Temp. Coef. | Within ±2.5mV/°C | Within ±1.5mV/°C | |
| Control power supply | ±15V±5% | | |
| Consumption current | Within 30mA | | |
| Operating Temp. | -10°C~+80°C | | |
| Storage Temp. | -15°C~+85°C | | |
| Dielectric withstand voltage | 2500V AC 50/60Hz 1minute | | |
| Insulation resistance | Not less than 500MΩ 500V DC | | |

Note1) The indicated rated output is the one when no load is applied.

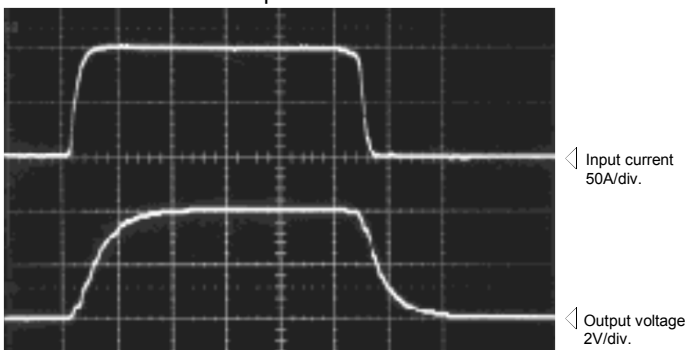
Note2) The indicated residual output is the one after the core hysteresis is removed.

Characteristics chart

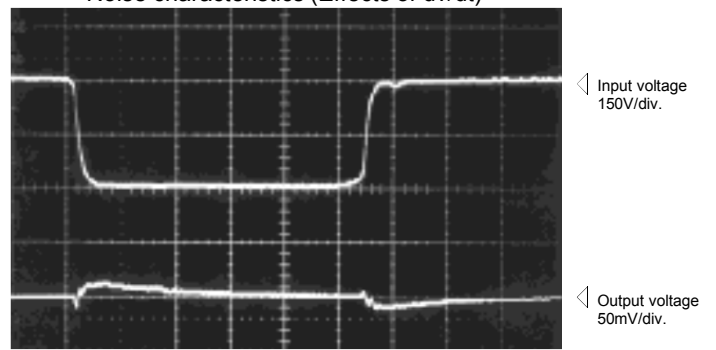
HC-U100V4B15

Time base: 5μs/div.

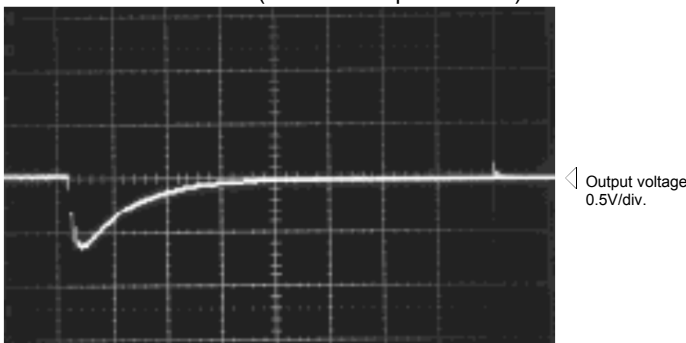
Pulse current response characteristic



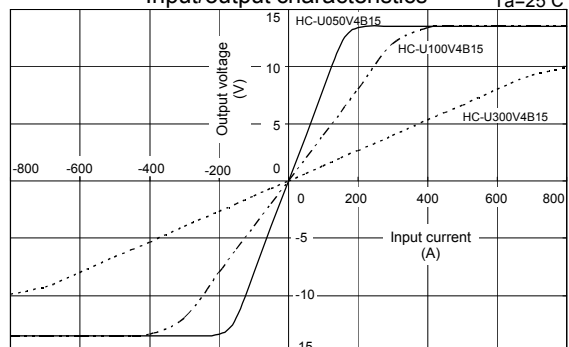
Noise characteristics (Effects of dv/dt)



Noise characteristics (Effects of impulse noise)



Input/output characteristics



Note: The marks "◁" means 0V or 0A.