

HC-SL



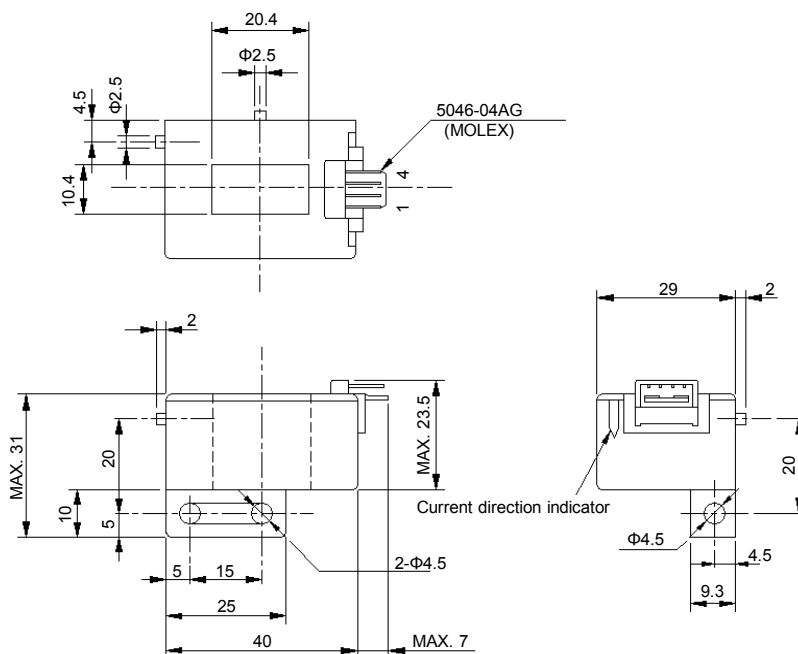
- Rated current 50A ~ 800A
- Single-power supplies also available

Applications

Inverters, Servo drivers, Power supply equipment, Uninterruptible power supply (UPS), NC machine tools, Welders

Dimensions

(mm)



Supported connector housing  
5051-04 (MOLEX)

Terminal No. 1 - (+) terminal  
2 - (-) terminal  
3 - Output  
4 - GND

Weight : 46g

General tolerance: ±0.5

### Specification

Ta=25°C

| Type                         | HC-SL050V4B15  | HC-SL100V4B15    | HC-SL300V4B15  | HC-SL600V4B15 | HC-SL800V4B15 |
|------------------------------|--|------------------|----------------|---------------|---------------|
| Rated current [ If ]         | ±50A   | ±100A            | ±300A          | ±600A         | ±800A         |
| Saturation current [ Is ]    | ±150A  | ±300A            | ±900A          | ±1000A        | ±1000A        |
| Linearity limits             | 0~±150A  | 0~±300A          | 0~±700A        | 0~±900A       | 0~±900A       |
| Rated output [ Vh ]          | ±4V±1.5%<br>(RL=10kΩ)  | ±4V±1% (RL=10kΩ) |                |               |               |
| Residual output [ Vo ]       | Within ±50mV   | Within ±30mV     |                |               |               |
| Output linearity             | Within ±1%   |                  |                |               |               |
| Response time                | Within 10μs (The smaller one on either at di/dt = 100A/μs or If/μs.) |                  |                |               |               |
| Response performance         | Within 10%   |                  |                |               |               |
| Hysteresis voltage range     | Within 30mV  |                  |                |               |               |
| Output Temp. Coef.           | Within ±0.1%/°C  |                  |                |               |               |
| Residual output Temp. Coef.  | Within ±3mV/°C   | Within ±1.5mV/°C | Within ±1mV/°C |               |               |
| Control power supply         | ±15V±5%  |                  |                |               |               |
| Consumption current          | Within 30mA  |                  |                |               |               |
| Operating Temp.              | -10°C~+80°C  |                  |                |               |               |
| Storage Temp.                | -15°C~+85°C  |                  |                |               |               |
| Dielectric withstand voltage | 2500V AC 50/60Hz 1minute   |                  |                |               |               |
| Insulation resistance        | Not less than 500MΩ 500V DC  |                  |                |               |               |

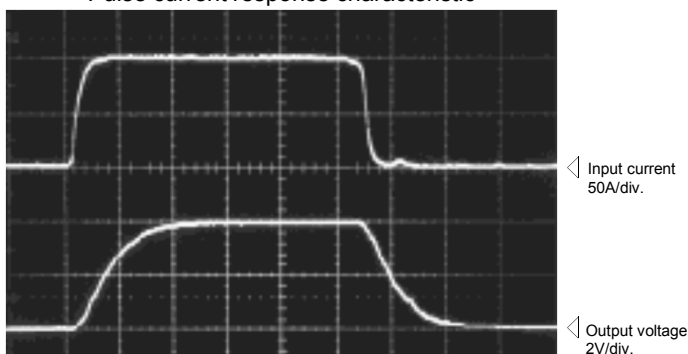
Note1) The indicated residual output is the one after the core hysteresis is removed.

### Characteristics chart

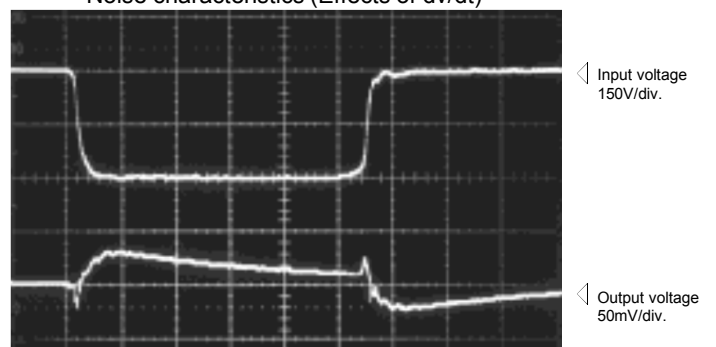
HC-SL100V4B15

Time base: 5μs/div.

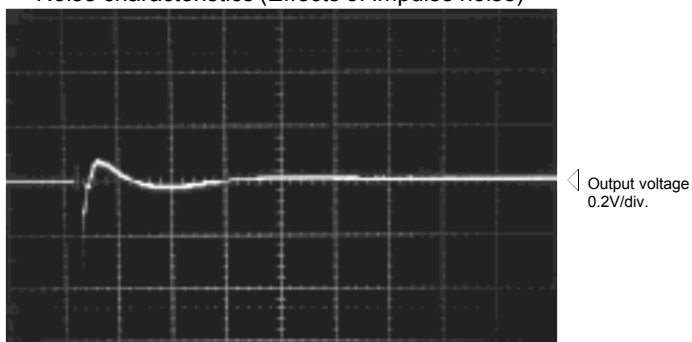
Pulse current response characteristic



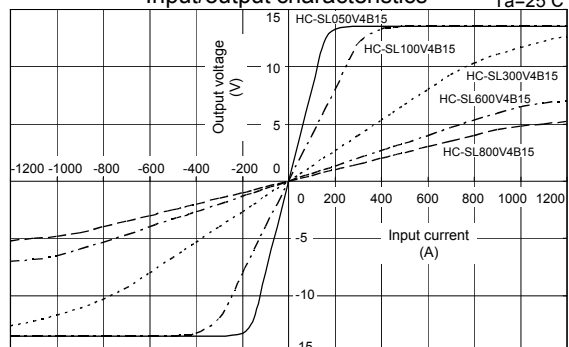
Noise characteristics (Effects of dv/dt)



Noise characteristics (Effects of impulse noise)



Input/output characteristics



Note: The marks "◁" means 0V or 0A.